

FOUNDERS ACADEMY PRESENTS

# ARMOR-ALL

Strategies  
for SAT-PSAT-Test taking



Visit us online at

[www.foundersacademy.org](http://www.foundersacademy.org)

June 28 to Aug 12, 2004

**FOUNDERS ACADEMY**

323.750-9599

323.750-9699 fax

[info@foundersacademy.org](mailto:info@foundersacademy.org)

**we're going places**

This summer, Founders Academy continues to fulfill its commitment to the older children of families affected by substance abuse by offering *ARMOR-ALL*, an action-packed seven weeks of martial arts, SAT prep and art. Every day begins with martial arts and every week ends with a field trip.

Please enjoy this guide to the new SAT. Visit us online at [www.foundersacademy.org](http://www.foundersacademy.org) to learn more about Founders Academy.

*Diane Louie, Director  
Founders Academy*

**Q: When will the new SAT be implemented?**

The test begins with the class of 2006 so it will be given starting in March 2005.

**Q: What will the cost be? What about fee waivers?**

The College Board anticipates that the test fee will increase by \$10 to \$12. Continuing our current policy, disadvantaged students can apply for fee waivers to cover test fees.

**Q: Will the test be longer?**

The total testing time for the new SAT will be 3 hours and 45 minutes.

**Q: How will student scores change?**

The new SAT will have three scores, each on the familiar scale of 200-800. Student scores will include writing (W 200-800), mathematics (M 200-800), and critical reading (CR 200-800). Two subscores will be given for the writing section: a multiple-choice subscore on a scale of 20-80, and an essay subscore, on a scale of 2-12.

The math and reading scores can be compared to the existing math and verbal scores to provide consistency for college admissions purposes. However, the SAT writing score is completely new.

**Q: How will colleges use the new writing score?**

Different colleges will use the writing score in different ways. Writing scores may be used for admissions decisions and possibly for placement in English Composition courses. However, for the first few years, some colleges may choose to use writing scores for research purposes only, and not for

decisions about admissions or placement.

In addition to the raw writing score, colleges that are sent a student's SAT score will also be able to access the student's essay.

**Q: How will the essay be scored?**

Essays will be evaluated holistically. Each essay will be read for the total impression it creates, rather than for its individual aspects. The scoring procedures used will be similar to those used on the SAT II: Writing Test.

**Q: Will the test be fair to all students?**

We do not expect any minority group, including ESL students, to see any significant differences in their relative performances. Research from a spring 2003 field test involving more than 45,000 students, as well as research on the current SAT, shows that ESL students and minority groups perform on writing as well as or better than on verbal measures.

**Q: Will the SAT II: Subject Tests change?**

The SAT II: Subject Tests are not expected to change. Subject Tests are the one-hour tests designed to measure students' knowledge and ability to apply that knowledge in specific subject areas. Many colleges require applicants to take one or more of these tests in addition to the SAT. There are currently 22 Subject Tests from which to choose.



## THE WRITING SECTION

### OVERVIEW

Time	Content	Item Types	Score
60 min.	Grammar, usage, and word choice	Multiple choice questions (35 min.) and student-written essay (25 min.)	200 - 800

Writing is a core skill needed for success in both college and the workplace. Research has shown that a student's ability to write a first draft of a short, timed essay relates positively to the student's ability to perform successfully in college courses that require writing. The addition of the writing section will reinforce the importance of writing skills throughout a student's education and support the academic achievement of all students, bolstering their chances for academic success in college.

Questions similar to the multiple-choice questions on the SAT II: Writing Subject Test will be included to see how well students use standard written English. The multiple-choice questions will test students' ability to identify sentence errors, improve sentences, and improve paragraphs.

Every day starts with martial arts

03

The essay will measure the student's skill in developing a point of view on an issue. Students must first think critically about the issue presented in the essay assignment, forming their own individual perspective on the topic. Then they must develop that point of view, using reasoning and evidence based on their own experiences, readings, or observations to support their ideas. We recognize that an essay written in a short amount of time will not be polished, but represents the initial phase of the writing process: the first draft.



## IDENTIFYING SENTENCE ERRORS

In the following item, students are asked to identify the error in usage.

It is likely that the opening of the convention center,

previously set for July 1, would be postponed

(A) (B) (C)

because of the bricklayers' strike. No error

(D) (E)

04

Correct answer: C

Explanation: "Would be" is the wrong tense of the verb in this sentence. The sentence concerns when the convention center is going to open. This is a time in the future, either July 1 or later if there is a strike. Since the opening will definitely take place, the future tense, "will be," is needed. "Would be" (the conditional tense) indicates only that an event might happen.

we're going places



## IMPROVING SENTENCES

In the following item, students are asked to improve the sentence.

Although several groups were absolutely opposed to the outside support given the revolutionary government, other groups were as equal in their adamant approval of that support.

- (A) were as equal in their adamant approval of
- (B) held equally adamant approval of
- (C) were equally adamant in approving
- (D) had approved equally adamantly
- (E) held approval equally adamant of

Correct Answer: C

05

Explanation: (C) is correct because it expresses the second part of the sentence in a way parallel to the first part. Two groups are being compared: groups “absolutely opposed to” and groups “equally adamant in.” Both phrases now have a common structure: an adverb modifying an adjective followed by a preposition.



## IMPROVING PARAGRAPHS

Directions: The following passage is an early draft of an essay. Some parts of the passage need to be rewritten. Read the passage and select the best answers for the questions that follow.



Some questions are about particular sentences or parts of sentences and ask you to improve sentence structure and word choice. Other questions refer to parts of the essay or the entire essay and ask you to consider organization and development. In making your decisions, follow the conventions of standard written English.

06

At one point in the movie *Raiders of the Lost Ark*, the evil archaeologist Belloq shows the heroic Indiana Jones a cheap watch. If the watch were to be buried in the desert for a thousand years and then dug up, Belloq says, it would be considered priceless. I often think of the scene whenever I consider the record album-collecting phenomenon, it being one of the more remarkable aspects of popular culture in the United States. Collecting record albums gives us a chance to make a low-cost investment that might pay dividends in the future.

When my aunt collected them in the mid-sixties, nobody regarded them as investments. A young fan shelled out dollar after dollar at the corner record store for no other reason than to assemble a complete collection of her favorite musical groups- in my aunt's case, the Beatles and the Supremes. By committing so much of her allowance each week to the relentless pursuit of that one group not yet in her collection-the immortal Yardbirds, let us say-she was proving her loyalty to her superstars.

**MoLAA**  
Museum of Latin American Art

**we're going places**

The recording industry is a capitalist enterprise and so this hobby has become one. Just as everyone has heard of the exorbitant prices being paid for the Beatles' first album in mint condition, so everyone is certain that a payoff is among each stack of old records. But if that album was buried somewhere in my aunt's closet of dusty records, she never knew it. Long before she learned it, she had thrown them out.

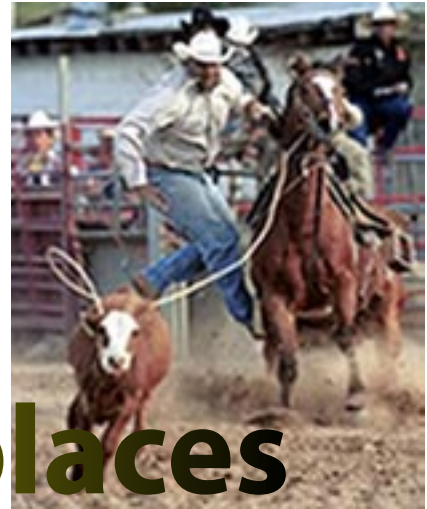
In the context of the first paragraph, which revision is most needed in sentence 3?

- (A) Insert "As a matter of fact" at the beginning.
- (B) Omit the words "it being."
- (C) Omit the word "scene."
- (D) Change the comma to a semicolon.
- (E) Change "think" to "thought" and "consider" to "considered."

Correct Answer: B

07

Explanation: The words "it being" are unnecessary.



we're going places



## Did you know?

Since 1989, the **Founders Academy** team has been working in Watts, South LA and Compton with families affected by substance abuse.

## ESSAY

The essay component will ask students to write in response to an essay assignment, or prompt, which they must address in order to receive a score. These prompts will be carefully selected to enable students to react and respond quickly in a variety of ways. They will be written to be easily accessible to the general test-taking population, including students for whom English is a second language (ESL), and will be free of figurative, technical, or specific literary references.

The prompt will give students the opportunity to use a broad range of experiences, learning, and ideas to support their points of view on the issue addressed. Because the prompt will require students to address a specific issue, students will not be able to prepare an essay in advance that will effectively address the essay assignment.

The prompt will consist of either a pair of quotations or a short paragraph (no more than 80 words in total length) adapted from some authentic text.

The following is an SAT essay prompt involving a short paragraph.

Directions: Think carefully about the issue presented in the following excerpt and the assignment below.

The principle is this: each failure leads us closer to deeper knowledge, to greater creativity in understanding old data, to new lines of inquiry. Thomas Edison experienced 10,000 failures before he succeeded in perfecting the lightbulb. When a friend of his remarked that 10,000 failures was a lot, Edison replied, "I didn't fail 10,000 times, I successfully eliminated 10,000 materials and combinations that didn't work."

Myles Brand, "Taking the Measure of Your Success"

Assignment: What is your view on the idea that it takes failure to achieve success? Plan and write an essay in which you develop your point of view on this issue. Support your position with reasoning and examples taken from your reading, studies, experience, or observations.

08

## THE CRITICAL READING SECTION

### OVERVIEW

Time	Content	Item Types	Scores
70 min. (two 25-min. sections and one 20-min. section)	Critical reading and sentence-level reading	Reading comprehension, sentence completions, and paragraph-length critical reading	200-800

The critical reading section, currently known as the verbal section, will include short reading passages along with the existing long reading passages. Analogies will be eliminated, but sentence-completion questions will remain.

Reading passages will range from 500 to 800 words. The new short reading passages will be paragraphs of about 100 words, followed by questions similar to questions on the longer reading passages.

Directions: The passage below is followed by two questions based on its content. Answer the questions on the basis of what is stated or implied in the passage.

Dinosaurs have such a powerful grip on the public consciousness that it is easy to forget just how recently scientists have become aware of them. A two-year-old child today may be able to rattle off three dinosaur names, but in 1824 there was only one known dinosaur. Period. The word “dinosaur” didn’t even exist until 1841. Indeed, in those early years, the world was baffled by the discovery of these absurdly enormous creatures.



09



UCLA

1. The reference to the “two-year-old child” (line 2) primarily serves to
- (A) challenge a popular assumption
  - (B) highlight the extent of a change
  - (C) suggest that a perspective is simplistic
  - (D) introduce a controversial idea
  - (E) question a contemporary preoccupation

Correct answer: B

## we're going places



Explanation: Choice (B) is correct because the reference to the “two-year-old child” who can “rattle off three dinosaur names” shows how dramatically the situation has changed since 1824. Today even little children know more about dinosaurs than many scientists did in the 1820s.

2. The statement “Period” in line 4 primarily serves to emphasize the
- (A) authoritative nature of a finding
  - (B) lack of flexibility in a popular theory
  - (C) stubborn nature of a group of researchers
  - (D) limited knowledge about a subject
  - (E) refusal of the public to accept new discoveries

10

Correct answer: D

Explanation: Choice (D) is correct because the word “Period” gives emphasis to the preceding statement that “there was only one known dinosaur” in 1824. Clearly, people at that time had “limited knowledge” about dinosaurs.

## THE MATHEMATICS SECTION

### OVERVIEW

Time	Content	Item Types	Score
70 min. (two 25-min. sections and one 20-min. section)	Number and operations; algebra and functions; geometry; statistics, probability, and data analysis	Five-choice multiple-choice questions and student-produced responses	200 - 800

# 11

The new SAT will include expanded math topics, such as exponential growth, absolute value, and functional notation, and place greater emphasis on such other topics as linear functions, manipulations with exponents, and properties of tangent lines. Quantitative comparisons will be eliminated.

#### CAN STUDENTS USE A CALCULATOR?

Yes. Students can continue to use a four-function, scientific, or graphing calculator. The College Board recommends that students use a calculator at least at the scientific level for the new SAT, although it's still possible to solve every question without a calculator.



# we're going places

City of Santa Monica Wednesday Farmers Market



## NUMBER & OPERATIONS

### SEQUENCES INVOLVING EXPONENTIAL GROWTH

The new SAT will include mathematics questions that require knowledge of exponential growth sequences, also called geometric sequences. In a geometric sequence, there is a constant ratio between consecutive terms. For example, 7, 21, 63, 189, ... is a geometric sequence that has constant ratio 3 and begins with the term 7. The term obtained after multiplying  $n$  times by 3 is  $7 \times 3^n$ . Since these sequences have real-life applications, questions in this area might be presented in contexts such as population growth. One example might be that of a population that initially numbers 100 and grows by doubling every eight years. The expression

$100 \times 2^{\frac{t}{8}}$  would give the population  $t$  years after it begins to grow.

### SETS (UNION, INTERSECTION, ELEMENTS)

If a set is a collection of things, then the “things” can be referred to as “elements” or “members” of the set. Questions on the new SAT might ask about the union of two sets (i.e., the set consisting of elements that are in either set or both sets) or the intersection of two sets (i.e., the set of common elements). For example, if set  $X$  is the set of positive even integers and set  $Y$  is the set of positive odd integers, a question might ask students to recognize that the union of the two sets is the set of all positive integers.

# 12



## Did you know?

All Founders Academy

programs are

tuition free.

## Absolute Value

The absolute value of a number is its distance on the number line from the origin. The absolute value of the number  $w$  is denoted by  $|w|$ . Students who take the new SAT should be familiar with both the concept and notation of absolute value and be able to work with expressions, equations, and functions that involve absolute value.

Rational Equations and Inequalities

$$\frac{2x+1}{x-3}$$

An example of a rational algebraic expression is  $\frac{2x+1}{x-3}$ . Equations or inequalities involving such expressions will be included on the new SAT.

## Radical Equations

An example of a radical equation is  $5\sqrt{x+14} = 29$ . The new SAT will include questions involving such equations.

## Integer and Rational Exponents

On the current SAT, exponents are restricted to positive integers. The new SAT will have expressions such as  $x^{-3}$  involving negative exponents. There will also be expressions such as  $m^{\frac{3}{4}}$  where the exponent is a rational number.

For example:

If  $x^{-3} = 64$ , what is the value of  $x^{\frac{1}{2}}$ ?

- (A)  $\frac{1}{4}$
- (B)  $\frac{1}{2}$
- (C) 4
- (D) 8
- (E) 16

Correct answer: B

Explanation: If  $x^{-3} = 64$ , then  $\frac{1}{x^3} = 64 = 4^3$ . So  $x^3 = \frac{1}{4^3}$  and the value of  $x$  is  $\frac{1}{4}$ . Substituting  $\frac{1}{4}$

13



for  $x$  in  $x^{\frac{1}{2}}$  gives  $x^{\frac{1}{2}} = \sqrt{x} = \sqrt{\frac{1}{4}} = \frac{1}{2}$ . The correct answer is B.

What's new about this question? The current SAT has questions involving positive-integer exponents. The new SAT will also have expressions involving negative exponents, such as  $x^{-3}$ , and fractional exponents, such as  $x^{\frac{1}{2}}$ .

### Direct and Inverse Variation

The new SAT may include questions involving quantities that are directly proportional to each other and quantities that are inversely proportional to each other. The quantities  $x$  and  $y$  are directly proportional if  $y = kx$ , for some constant  $k$ . They are said to be inversely proportional if

$y = \frac{k}{x}$  for some constant  $k$ .

14

### Function Notation

Students should be familiar with both the concept of a function and with function notation. For example, if the function  $f$  is defined by  $f(x) = x + 2x$ , students should know that  $f(5) = 5 + 25 = 37$ .

For example:

If  $f$  is a linear function and if  $f(6) = 7$  and  $f(8) = 12$ , what is the slope of the graph of  $f$  in the  $xy$ -plane?

Correct answer:  $5/2$

Explanation: If  $f$  is a linear function and  $f(6) = 7$  and  $f(8) = 12$ , then the points  $(6,7)$  and  $(8,12)$  are

on the graph of  $f$ . Therefore, the graph of  $f$  is a line with slope  $\frac{y_2 - y_1}{x_2 - x_1} = \frac{12 - 7}{8 - 6} = \frac{5}{2}$ . Grid  $2$  or  $2.5$ .

What's new about this question? The new element in this question is the use of the notation  $f(x)$  to talk about the function.

### Concepts of Domain and Range

The domain of a function is the set of all values on which the function is defined. The range is the set of all values that are the output or the result of the function for values in the domain. The new SAT will include questions that ask about values of  $x$  at which a particular function is



## Did you know?

The **Founders Academy**

motto is "Education...

my entitlement, my

obligation". The mission

statement charges

**Founders Academy**

with a responsibility to

children, their families

and the adults who wish

to work effectively with

the community.

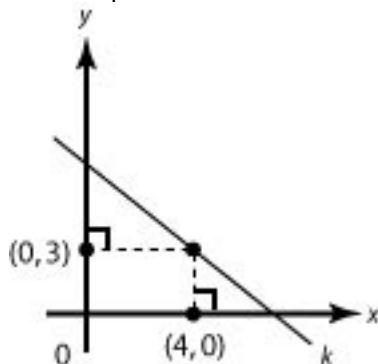
not defined (outside the domain), or values that  $f(x)$  cannot equal (outside the range).

## Functions as Models

The new SAT will include questions that involve mathematical models of real-life situations. For example, a question might present information about the projected sales of a product at various prices and ask for a mathematical model in the form of a graph or equation that represents projected sales as a function of price.

## Linear Functions - Equations and Graphs

The new SAT will include questions involving linear equations, such as  $y = mx + b$ , where  $m$  and  $b$  are constants. Some questions may involve identifying graphs of linear functions. For example:



15

Note: Figure not drawn to scale

In the figure above, if line  $k$  has a slope of  $-1$ , what is the  $y$ -intercept of  $k$ ?

- (A) 6
- (B) 7
- (C) 8
- (D) 9
- (E) 10

Correct answer: B



Explanation: Line  $k$  has equation  $y = mx + b$  where  $m$  and  $b$  are constants. Since  $k$  has slope  $-1$ , the value of  $m$  is  $-1$ . From the information in the graph, it is possible to determine that the point  $(4,3)$  is on line  $k$ . This means that  $(x,y) = (4,3)$  satisfies the equation  $y = -x + b$  so  $3 = -4 + b$ . Solving for  $b$  gives  $b = 7$ . This is the  $y$ -intercept of  $k$ , so the correct answer is B.

What's new about this question? The current SAT has questions involving lines and points in the coordinate plane, as well as the slope of one or more lines. The new element in this question is the use of the term "y-intercept."



### Quadratic Functions - Equations and Graphs

Questions involving quadratic equations and/or their graphs may appear on the new SAT. For example, a question might involve comparing the graphs of  $y = 2x^2$  and  $y = 2(x - 1)^2$ .

16

**we're going places**

17



Visit us online at  
[www.foundersacademy.org](http://wwwFOUNDERSacademy.org)

School does a job no other institution does. It cannot afford to fail. Failure in school has inevitable consequences for the whole child — his education, his character and his life. Failure of school has dire consequences for the whole society.

When no other exists, school must provide a world where exercises which build cognitive and character essentials may be safely practiced. School must facilitate constant, guided challenge, bouts with failure and eventual success.

Founders Academy believes that education is both an entitlement and an obligation of all citizens. This school strives to be a place where the optimum human condition is identified, modeled and embraced by all. This school seeks to fulfill its commitment to the education, character and life of each student and his family.

Founders Academy is a 501(c)3 non-profit organization providing educational opportunities to the older children of families affected by substance abuse.



Please help us prepare our young people to be productive members of society. Children need to know that there is a plan for them and that competent adults are willing to help them achieve that plan.

18



**we're going places**

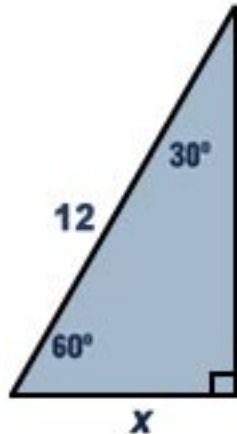
## GEOMETRY & MEASUREMENT

### GEOMETRIC NOTATION FOR LENGTH, SEGMENTS, LINES, RAYS, AND CONGRUENCE

The new SAT will use the geometric notation commonly found in high school textbooks. For example  $\overleftrightarrow{PQ}$  will be used to represent the line that passes through points P and Q, and  $\overrightarrow{PQ}$  will indicate the ray beginning at point P and passing through point Q. The line segment with points P and Q as endpoints will be represented by  $\overline{PQ}$  and PQ will represent the length of  $\overline{PQ}$ . The term "congruent" and the congruence symbol will be used.

### PROBLEMS IN WHICH TRIGONOMETRY MAY BE USED AS AN ALTERNATIVE METHOD OF SOLUTION

The SAT will include more questions that rely on the special properties of 30-60-90 triangles or 45-45-90 triangles. These questions can be answered by using trigonometric methods, but may also be answered using other methods. For example, in the triangle below, it is possible to find the value of x by using trigonometry ( $\sin 30^\circ = x/12$ ). But the value of x can also be determined with the knowledge that in a 30-60-90 triangle, the leg opposite the 30-degree angle is half as long as the hypotenuse.



19

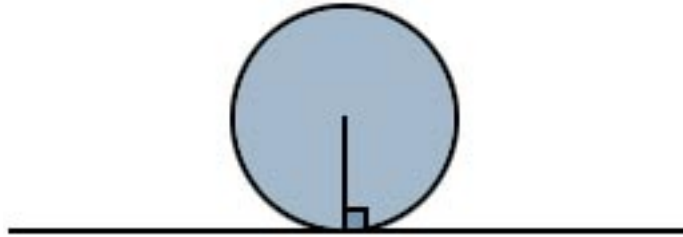


Visit us online at  
[www.foundersacademy.org](http://www.foundersacademy.org)



## PROPERTIES OF TANGENT LINES

Questions on the new SAT may require knowledge of the property that a line tangent to a circle is perpendicular to a radius drawn to the point of tangency, as illustrated below.



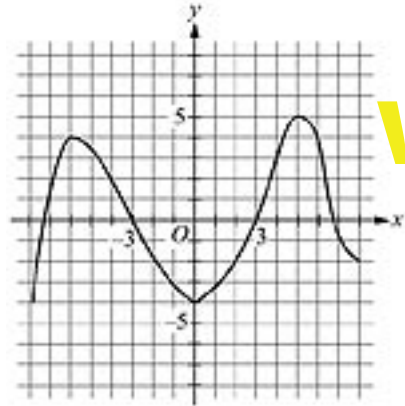
## COORDINATE GEOMETRY

Some questions on the new SAT may require knowledge of the properties of the slopes of parallel or perpendicular lines. In addition, some questions may require students to find the equations of lines, the midpoints of line segments, or the distance between two points in the coordinate plane.

The midpoint formula  $\overline{PQ}$  gives the midpoint of in terms of the coordinates of points P and Q: that is, if P has coordinates  $(x_1, y_1)$  and Q has coordinates  $(x_2, y_2)$  then the midpoint has coordinates  $(\frac{x_1 + x_2}{2}, \frac{y_1 + y_2}{2})$ . The distance formula gives the value of PQ in terms of the coordinates of P and Q:  $\sqrt{(x_1 - x_2)^2 + (y_1 - y_2)^2}$ .

## QUALITATIVE BEHAVIOR OF GRAPHS AND FUNCTIONS

A question on the new SAT might show the graph of a function in the  $xy$ -coordinate plane, as shown below, and ask students to give, for the portion of the graph shown, the number of values of  $x$  for which  $f(x) = 3$ . (The answer to this question is 4, because there are 4 different points at which the portion of the graph shown and the graph of the line  $y = 3$  intersect.)



# we're going places



## TRANSFORMATIONS AND THEIR EFFECT ON GRAPHS OF FUNCTIONS

The new SAT will include questions that ask students to determine the effect of simple transformations on graphs of functions. For example, the graph of a function  $f(x)$  could be given and students would be asked questions about the graph of the function  $f(x + 2)$ .

# 21

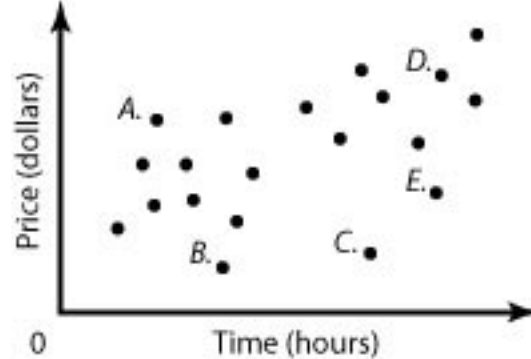


## DATA ANALYSIS, STATISTICS, & PROBABILITY

### DATA INTERPRETATION, SCATTERPLOTS, AND MATRICES

A question on the new SAT might ask about the line of best fit for a scatterplot. Students would be expected to identify the general characteristics of the line of best fit by looking at the scatterplot. For example, students might determine that this line has a slope that is positive but less than 1. Students would not be expected to use formal methods of finding the equation of the line of best fit. Students will also be expected to be able to interpret data displayed in tables, charts, and graphs.

For example:



A science class bought 20 different batteries of various brands and prices. They tested each battery's duration by seeing how long it would help a motor running before losing power. For each battery, the class plotted the duration against the price, as shown above. Of the five labeled points, which one corresponds to the battery that cost the least amount per hour of duration?

- A) A
- B) B
- C) C
- D) D
- E) E

22

Correct answer: C



Visit us online at  
[www.foundersacademy.org](http://www.foundersacademy.org)

Explanation:

For each battery, the cost per hour of duration is equal to the price of the battery divided by the duration of that battery. For each of the points on the graph, this value corresponds to the slope of the line segment from point O to that point. Of the line segments  $OA$ ,  $OB$ ,  $OC$ ,  $OD$  and  $OE$ , the one with the smallest slope is  $OC$ . So, battery C is the one for which the cost per hour of duration was least. The correct answer is C.

What's new about this question? The new SAT will have more questions involving scatterplots and proportional reasoning, of which this question is an example.

### GEOMETRIC PROBABILITY

Some questions on the new SAT may involve geometric probability. For example, if a point is to be chosen at random from the interior of a region, part of which is shaded, students might be asked to find the probability that the point chosen will be from the shaded portion of the region. These questions could be presented in a context such as throwing darts at a target.



# we're going places

# 23





## Did you know?

### Founders Academy

partners closely with valued members of the business, arts and social service communities to provide educational opportunities to the older children of families affected by substance abuse.

## HOW SCORES WILL CHANGE

Each section of the test will be scored using the familiar scale of 200-800, and scores for the current and future tests will remain equivalent. The new writing test will also be scored using a scale of 200-800. Two subscores will be given for the writing section: a multiple-choice subscore on a scale of 20-80, and an essay subscore, on a scale of 2-12.

## THE ESSAY

# 24

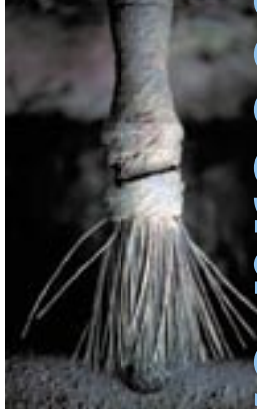
Essays will be evaluated holistically. Each essay will be read for the total impression it creates, rather than for its individual aspects. Even with some errors in spelling, punctuation, and grammar, students can still get a top score on the essay. Handwriting will not count against students, but essay readers must be able to read handwriting in order to score student essays, so students should try to write legibly.

The essay will be scored by experienced and trained high school and college teachers. Each essay will be scored by two people who won't know each other's score. They won't know the student's identity or school either. Each reader will give the essay a score from 1 to 6 (6 is the highest score).

### SCORE OF 6

An essay in this category is outstanding, demonstrating clear and consistent mastery, although it may have a few minor errors. A typical essay

- \* effectively and insightfully develops a point of view on the issue and demonstrates outstanding critical thinking, using clearly appropriate examples, reasons, and other evidence to support its position
- \* is well organized and clearly focused, demonstrating clear coherence and smooth progression of ideas
- \* exhibits skillful use of language, using a varied, accurate, and apt vocabulary
- \* demonstrates meaningful variety in sentence structure
- \* is free of most errors in grammar, usage, and mechanics



# examining the creative process

## SCORE OF 5

An essay in this category is effective, demonstrating reasonably consistent mastery, although it will have occasional errors or lapses in quality. A typical essay

- \* effectively develops a point of view on the issue and demonstrates strong critical thinking, generally using appropriate examples, reasons, and other evidence to support its position
- \* is well organized and focused, demonstrating coherence and progression of ideas
- \* exhibits facility in the use of language, using appropriate vocabulary
- \* demonstrates variety in sentence structure
- \* is generally free of most errors in grammar, usage, and mechanics

25

## SCORE OF 4

An essay in this category is competent, demonstrating adequate mastery, although it will have lapses in quality. A typical essay

- \* develops a point of view on the issue and demonstrates competent critical thinking, using adequate examples, reasons, and other evidence to support its position
- \* is generally organized and focused, demonstrating some coherence and progression of ideas
- \* exhibits adequate but inconsistent facility in the use of language, using generally appropriate vocabulary
- \* demonstrates some variety in sentence structure
- \* has some errors in grammar, usage, and mechanics



Visit us online at  
[www.foundersacademy.org](http://www.foundersacademy.org)

### SCORE OF 3

An essay in this category is inadequate, but demonstrates developing mastery, and is marked by one or more of the following weaknesses:

- \* develops a point of view on the issue, demonstrating some critical thinking, but may do so inconsistently or use inadequate examples, reasons, or other evidence to support its position
- \* is limited in its organization or focus, but may demonstrate some lapses in coherence or progression of ideas
- \* displays developing facility in the use of language, but sometimes uses weak vocabulary or inappropriate word choice
- \* lacks variety or demonstrates problems in sentence structure
- \* contains an accumulation of errors in grammar, usage, and mechanics

26

### SCORE OF 2

An essay in this category is seriously limited, demonstrating little mastery, and is flawed by one or more of the following weaknesses:

- \* develops a point of view on the issue that is vague or seriously limited, demonstrating weak critical thinking, providing inappropriate or insufficient examples, reasons, or other evidence to support its position
- \* is poorly organized and/or focused, or demonstrates serious problems with coherence or progression of ideas
- \* displays very little facility in the use of language, using very limited vocabulary or incorrect word choice
- \* demonstrates frequent problems in sentence structure
- \* contains errors in grammar, usage, and mechanics so serious that meaning is somewhat obscured

27

SCORE OF 1

An essay in this category is fundamentally lacking, demonstrating very little or no mastery, and is severely flawed by one or more of the following weaknesses:

- \* develops no viable point of view on the issue, or provides little or no evidence to support its position
- \* is disorganized or unfocused, resulting in a disjointed or incoherent essay
- \* displays fundamental errors in vocabulary
- \* demonstrates severe flaws in sentence structure
- \* contains pervasive errors in grammar, usage, or mechanics that persistently interfere with meaning

we're going places

SCORE OF 0

Essays not written on the essay assignment will receive a score of zero.



CATALINA  
ISLAND

# **FOUNDERS ACADEMY CONTRACT**

I will act in such a way that I will be proud of myself and others will be proud of me too.

I will come to school to learn and I will learn.

I will do my best.

I will respect myself and others.

I will respect my property, anything that is loaned to me and anything that belongs to others.

I will not be late if I can help it.

I will not be absent if I can help it.

I will teach someone one day.